

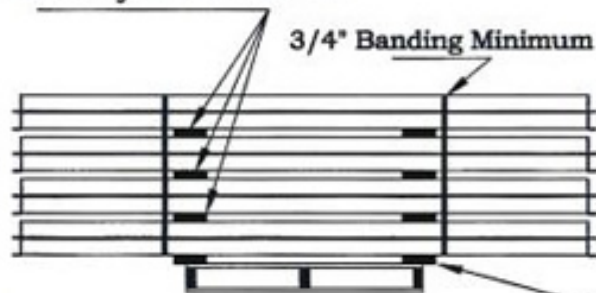


"The Rusty Rack Guys" Packaging Specifications



Beams

2x6 every two beam levels

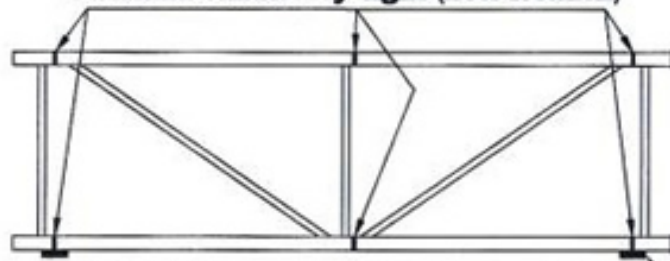


1. 8 Beams high
2. No more than 48" deep
3. Same Face Size and length on each pallet
4. Factory Bundles are acceptable

Overhang 2 x 6
by 1-1/2" to 2"

Uprights

6 column bands **very tight** (note location)

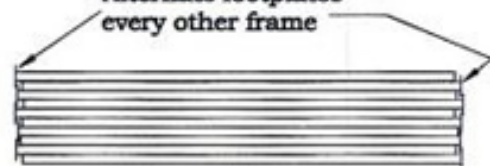


Side View

2 x 6 x 30" (10-frame bundle)
(or 48" for 15-frame bundle)

1. Same height, same depth
2. Band Frames on Edge
3. 10 or 15 frames per bundle
4. All damaged bundled separately

Alternate footplates
every other frame



Top View

Wire deck



Nested (one inside
the other - one up
one down)

1. Same depth, same width
2. 40 each per pallet
3. Band both Directions
4. Weave Bands through wire